

가로 : 368mm (92mm X 4면)

세로 : 256mm (128mm X 2면)

접는선



Quick User Guide

This is quick user guide which is including the basic information. For more detail information, you can download it at Gnet system website: http://www.gnet-system.com/en

Year of manufacture: listed on box
Manufacturer / manufacturer country: GNET SYSTEM CO., LTD / KOREA
Certification number: R-R-TLP-G-STYX
Year and scope of liability
1. A typical memory storage device has a lifespan, and data loss can occur due to storage life and static electricity or external voltage drops. Therefore, please do not be liable for any damages arising from loss of important stored data or related to this product.
** Manuals and product specifications are subject to change without notice for quality improvement.

Precautions for Micro SD Memory

- Micro SD memory is a consumable product with a read/write life due to its nature. Regular management is required as the recording may not be possible during prolonged use.
Third-party Micro SD memory purchases may cause compatibility issues with the product, so please purchase our memory. Memory not provided by us will be excluded from A/S.
In the event of a car accident, take out the Micro SD memory and store the recorded video on your computer. The recorded images will be overwritten sequentially by regular recording, etc. and the accident images will be erased.
Be sure to turn off the product power and then disconnect the Micro SD memory after verifying that the REC LED is off. If not so, recorded images may be damaged. Micro SD memory may be defective or the shorter.
If there is any data other than G-STYX only program and recorded video provided in Micro SD memory, it is automatically deleted to improve stability. Do not use the memory card you are using in the dash cam for any other purpose. It will be automatically deleted when inserted to the product.
It is possible to use it without errors even if memory is not formatted with its own JDR file system, but it is recommended to format it more than once a month because there may be a hardware error. Please download the SD Formatter program through http://www.sd-cards.org and check if there is any abnormality in Micro SD memory.
Micro SD memory cards used in this product are recommended for the dedicated memory cards of GNET. Memory cards other than the dedicated memory card of GNET may not operate properly. Applicable Micro SD memory can be a minimum of 32GB and a maximum of 512GB and external storage with maximum 2TB SSD.
Specifications: M.2 SATA3, Interface Key: B Key, B+ M Key Compatible, Supports up to 280MB/s.
If you install Micro SD memory for the first time or after formatting, it takes about 3 ~ 5 minutes for micro SD memory check and data generation depending on the capacity of Micro SD memory. Do not turn off the power or remove Micro SD memory during operation. If Micro SD memory is removed during data generation, it may not be recorded.

SPECIFICATION

Table with 2 columns: Feature and Specification. Includes Channel, Image Sensor, Audio Input, Video Compression, Audio Compression, Resolution, FPS, Wi-Fi button, Vibration Sensor, Speaker, Memory(Dual-size), External GPS antenna, PC Viewer, Power, Ambient current of parking, Operation temperature, Humidity, Waterproof / Resistant, and Dimension.

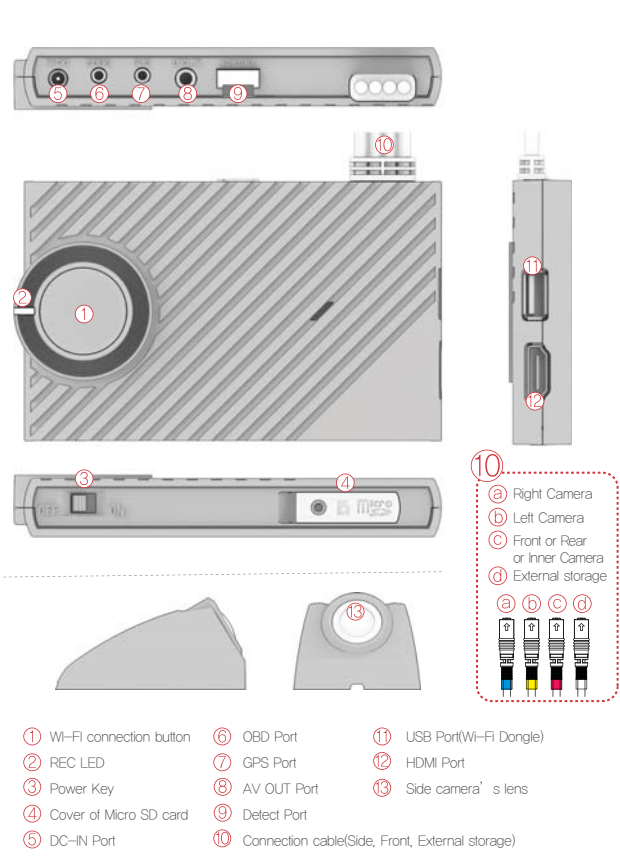
How to install the dash camera

- Free After Sales Service is not available in case you did not install dash cam in professional installer, so please install dash cam with the help of professional installer.
How to connect fuse cable(Voltage power cable)
Please refer to the car's manual about fuse box because it is different according to each vehicle's model. We recommend you to install dash cam in agent who bought or company related to car industry. We are not responsible for products damaged during installation by users.
1. Open the fuse box inside the line (light) under the driver's seat and find the fuse to install using the electric tester.
2. Connect the identified vehicle fuse, VCC and ACC lines, and then connect the fuse box again.
3. Connect the GND line to the body. (Do not connect with the bolts connected to the dashboard. No current flow.)
4. Connect the power to the product and check the normal operation and dash cables not to be seen.

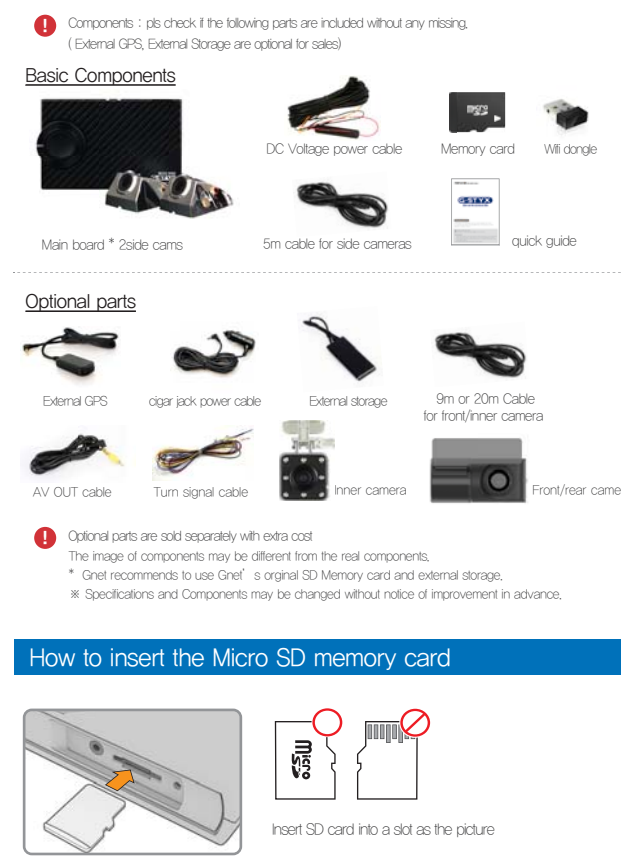
CAUTION FOR SAFE USE

- NOTE
All rights to the product are in GNET and are protected under copyright law. Unauthorized copying, modification and distribution without prior consent of GNET may be subject to criminal penalties.
Do not expose the unit to excessive shocks or debris.
Avoid excessive tanning or special glass as much as possible.
Do not disconnect or modify the product at your discretion.
Avoid high temperature or high humidity environment for normal operation of the product.
Please periodically check if the equipment operates normally.
Check the operation of the internal camera periodically on the LCD real-time screen before driving. If the internal camera is defective, the screen is not switched to the internal image and only the front image is captured.
Extending or cutting the side camera and rear camera cables may cause product quality problems.

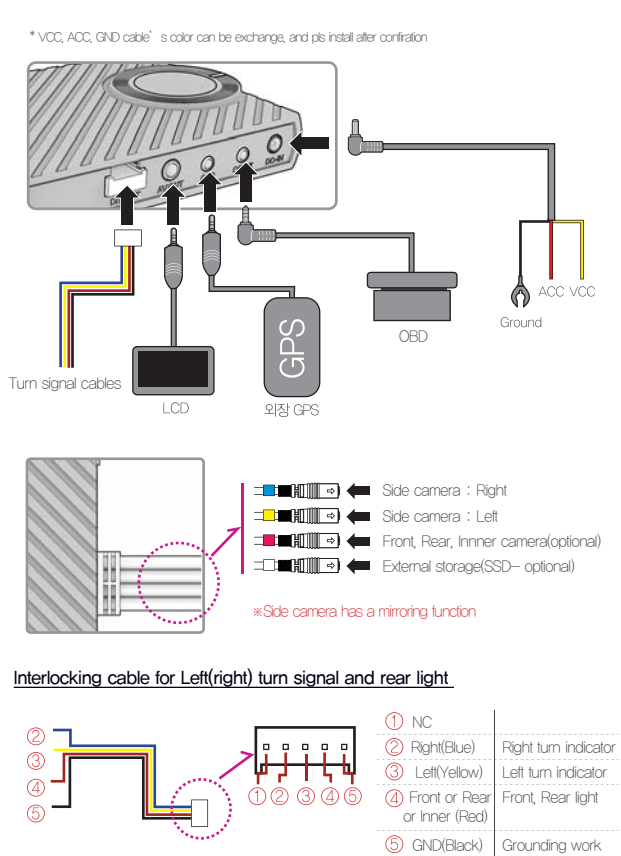
Parts' names - Front, Side camera



Components



Body port map



Product Features- Memory formatting

Press and hold the Wi-Fi key for more than 5 seconds to activate the memory format with voice guidance.
Please note that all data in the memory will be deleted during formatting.

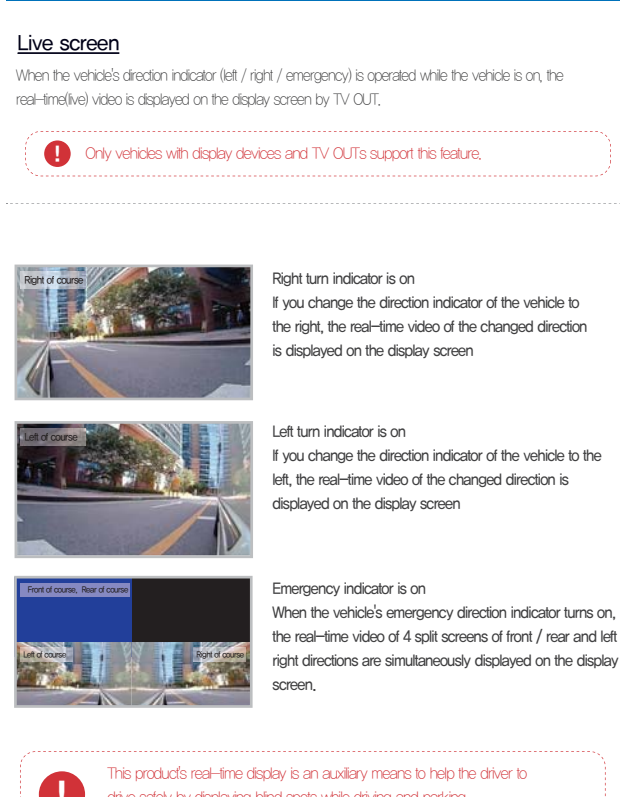
Product Features-Voice Recording Settings

Press and hold the Wi-Fi key for more than 3 seconds to set the voice recording with voice guidance.
Voice recording is set by default.
When the power is restarted, it will return to the default setting (Default setting: recording with voice recording).

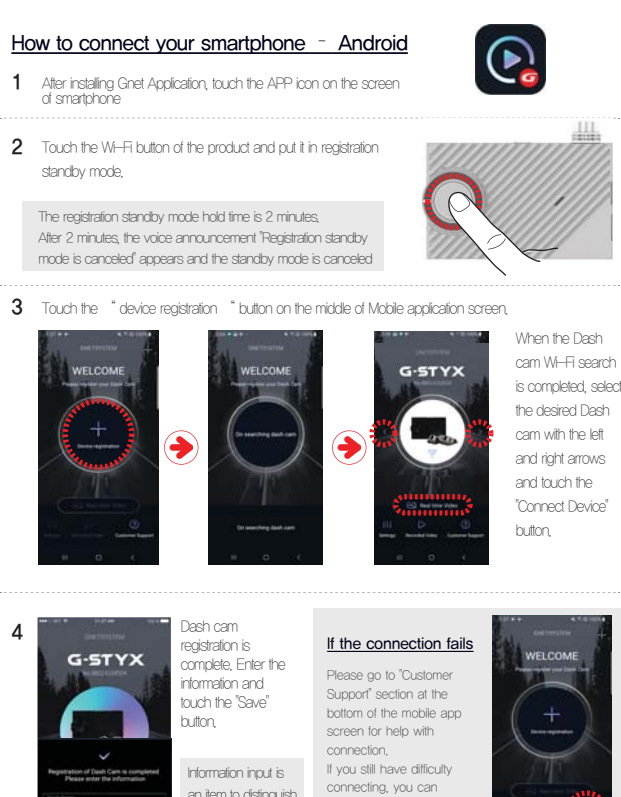
Product Features- Power

System can be turned off or restarted by the power slide button.
Dash cam is restarted after pushing the power slide button again when dash cam was off.

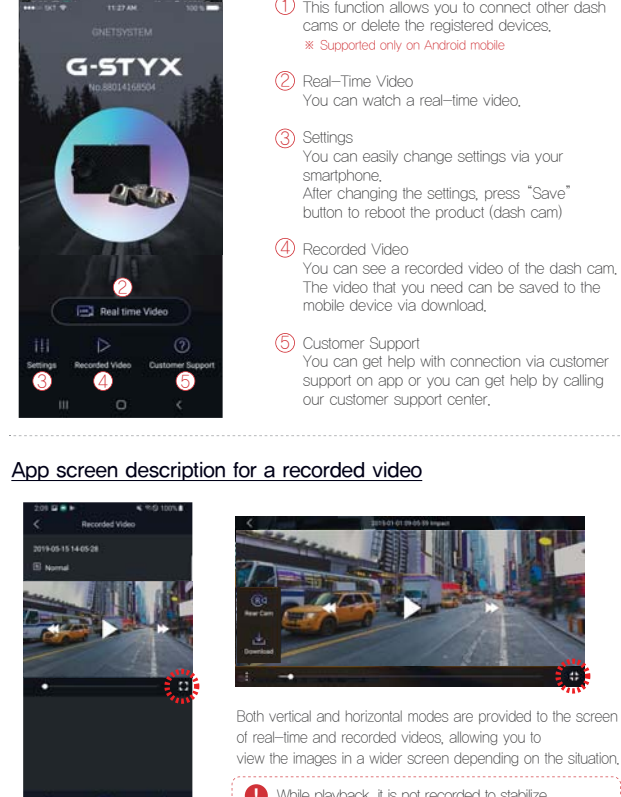
Product function- real time screen and transform



Smartphone(mobilephone) connection



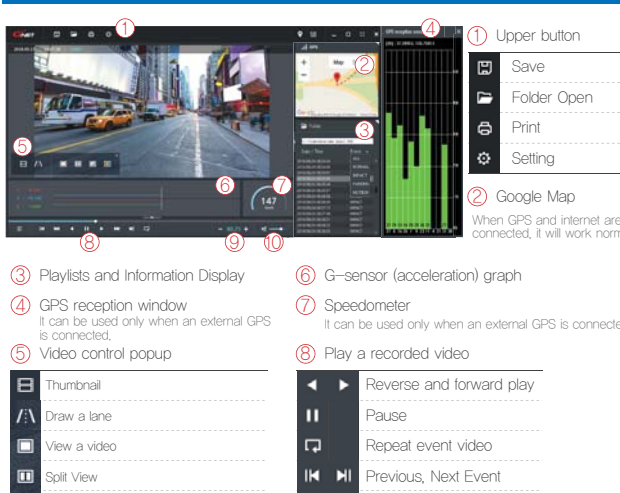
APP Main Screen Description



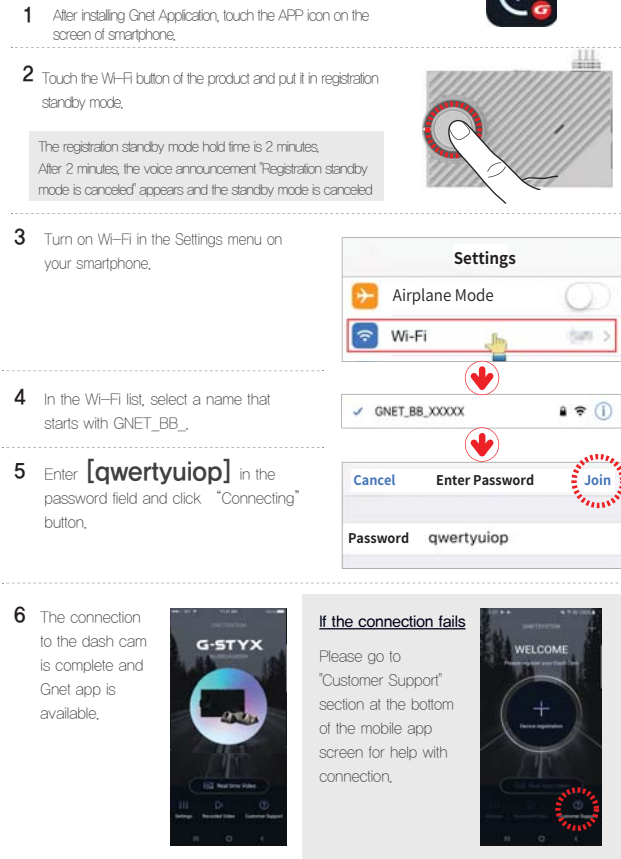
Product Features- ADAS function setting

Smart phone setting
You can setting if you click ADAS button after playing application on preference screen.
1. ADAS: You can select whether to use the function by pressing the button.
2. LDWS (Lane Departure Warning System): Alerts you when you are out of lane.
3. FVSA (Front Vehicle Start Alert): It is a function that notifies the driver that the vehicle ahead has started. When the distance to the front car is more than 20k during starting.
4. FCWS (Forward Collision Warning System): It is a function that notifies you when there is a risk of collision with a car ahead. When the distance from the front car is short suddenly.
5. LDWS sensitivity: sensitivity setting(box, middle, high).
6. FCWS sensitivity: sensitivity setting of collision alert(box, middle, high).
7. LDWS aspect: Setting the lowest speed or sensitivity(50km/h, 60km/h, 70km/h).

Player menu name



How to connect your smartphone - iOS



Warranty Card

Warranty Card table with fields for Product, Serial Number, Consumer Name, Address, and dates for Main body, Memory Card, and Power Cable.

