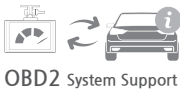


가로 : 368mm (92mm X 4면)

세로 : 256mm
(128mm X 2면)

G-NET SYSTEM A PARTNER IN SAFE DRIVING



2CH 4K UHD BLACKBOX

Quick Guide

This manual covers only the most basic contents for using GK. For details about GK, please check the contents on the web site (<http://www.gnetsystem.com>).

Equipment name: Car accident video recorder (SD) / Year of manufacture: listed in product box
Manufacturer / Country of Origin: GNET SYSTEM CO., LTD./ Korea / Certification Number: R-H-TLP-GK

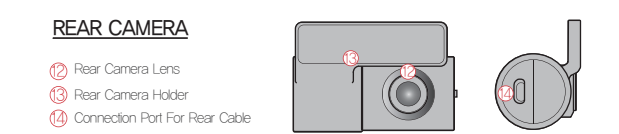
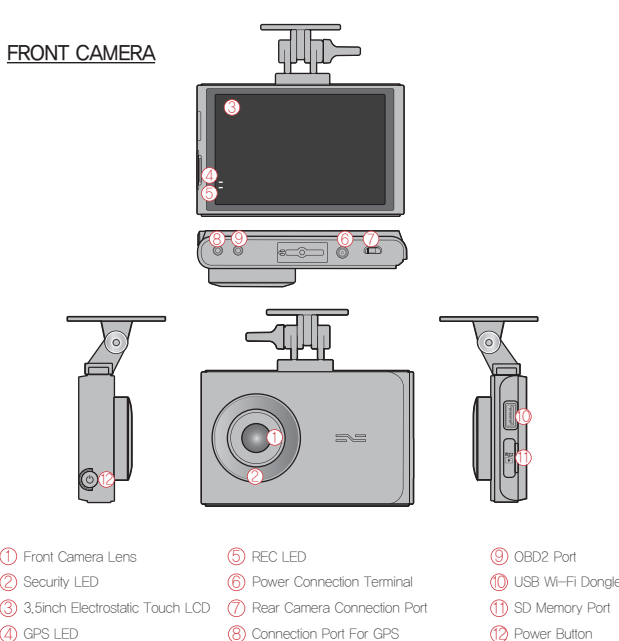
Scope of warranty and liability

- Typical memory storage devices have a usable life, and data may be lost due to storage life and static or external voltage shocks. Be sure to copy important storage data to another storage device.
- Except for damage caused by the failure of this product or loss of stored data, our company shall not be liable for any damages.
- Manuals and specifications are subject to change without notice to improve quality.

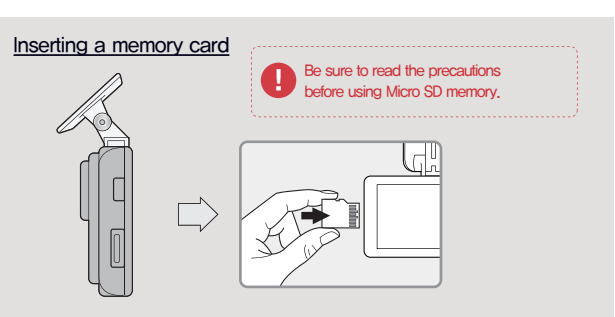
Micro SD Memory Precautions

- Micro SD memory is a consumable product with a read/write life due to its nature. Regular management is required as the recording may not be possible during prolonged use (Please note that we will not be liable for recording errors due to out-of-lifespan memory.)
- Third-party Micro SD memory purchases may cause compatibility issues with the product, so please purchase our memory. Memory not provided by us will be excluded from A/S.
- In the event of a car accident, take out the Micro SD memory and store the recorded video on your computer. The recorded images will be overwritten sequentially by regular recording, etc., and the accident images will be erased.
- Be sure to turn off the product power and then disconnect the Micro SD memory after verifying that the REC LED is off. If not so, recorded images may be damaged. Micro SD memory may be defective or live shorter.
- If there is any data other than GK-only program and a recorded video provided in Micro SD memory, it is automatically deleted to improve stability. (Do not use the memory card you are using in the dash cam for any other purpose. It will be automatically deleted when inserted to the product.)
- It is possible to use it without errors even if memory is not formatted with its own LDR file system, but it is recommended to format it more than once a month because there may be a hardware error.
 - Please download the SD Formatter program through <http://www.sdcard.org> and check if there is any abnormality in Micro SD memory.
- Micro SD memory cards used in this product are recommended for the dedicated memory cards of GNET. Memory cards other than the dedicated memory card of GNET may not operate properly. Micro SD memory can support a minimum of 4GB and a maximum of 256GB.
- If you install Micro SD memory for the first time or after formatting, it takes about 3 ~ 5 minutes for micro SD memory check and data generation depending on the capacity of Micro SD memory. Do not turn off the power or remove Micro SD memory during operation.
 - If Micro SD memory is removed during data generation, it may not be recorded.

Product Specifications



Product installing



Connecting a dash cam to a vehicle

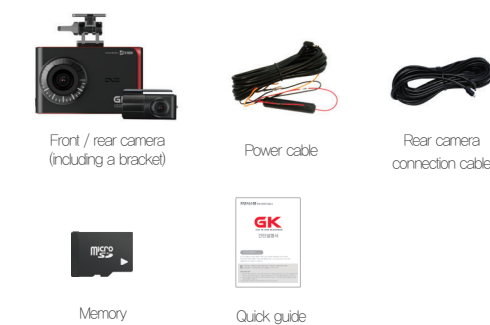
- Insert the Micro SD memory.
 - Slide the cradle from the left side to the right side to fit with the top part of the camera as shown in the figure.
 - Push the cradle until the "click" sound as shown in the picture.
- Select and attach the attachment location and then turn a knob to adjust an angle of recording of a dash cam. At the time, be careful not to obstruct the front of the lens.
 - Please be careful for a dash cam not to obstruct the view of a driver.
- Depending on the vehicle, the front angle may be different. It is recommend to hold a dash cam vertically based on a regular passenger car.
- Connect a direct power cable to the fuse box terminal inside the vehicle. (Connect a direct power cable to fuse box terminal which is always power-supplied, even if the ACC is out of a work, emergency light and door lock.)
 - Connect the DC power jack and the USB cables for a rear camera to the connection terminal on top of a dash cam.
 - When using power cable with 2 wires, fix and connect ACC and VCC lines to the terminal, and then change the setting to 2-wire mode. Configuration path : Setting - System - Voltage management - LBP - 2 wires / 3 wires
- attached to the rear camera cradle and attach it to the appropriate position on the windshield of vehicle. Connect the rear camera cable connected to the main unit to the rear camera.
 - When working with a rear camera cable, if the line is bent as shown in the picture, the data flow may be interrupted and a recording error may occur. Please be careful.
- Arrange power cables inside the vehicle using the cable long holder.
 - It is recommended to install the power cable to the driver's seat side and to install the rear cable to the passenger's seat side when arranging the cables, as it may cause a problem in GPS reception of navigation.

Precautions for safe use

- All rights to the product are in GNET and are protected under copyright law. Unauthorized copying, modification and distribution without prior consent of GNET may be subject to criminal penalties.
- Do not expose the unit to excessive shocks or debris. (This may damage the product or cause fire and electric shock.)
 - Avoid excessive tanning or special glass as much as possible. (The images could be blurry or distorted and it may cause a problem to GPS reception rate.)
 - Do not disconnect or modify the product at your discretion. (We are not responsible for any damage caused by user tampering.)
 - While driving, please refrain from checking or operating the product for safety.
 - When cleaning the inside of vehicle, do not use water or volatile chemicals to clean the product. (This may damage the product or cause fire and electric shock.)
 - If it is not used for a long period of time, the time of the product may be reset. Please always check the time. (Excluded when connecting external GPS)
 - When exposed to direct sunlight for a long period of time, recognition error of SD card and camera image distortion may occur due to temperature increase inside vehicle. If outdoor parking is required for a long period of time, disconnecting power may help to use your dash cam without any problems.
 - Avoid high temperature or high humidity environment for normal operation of the product.
 - Please periodically check if the equipment operates normally.
 - Check the operation of the internal camera periodically on the LCD real-time screen before driving. If the internal camera is defective, the screen is not switched to the internal image and only the front image is captured.
 - Some specifications may change for updates and optimizations.

Product Components

Basic Components



Components - Optional



- Please make sure that all the above components are included. (Optional GPS, OBD2 Jack, and Wi-Fi dongle are sold separately.)
- ※ The image of the component may differ from the real.
※ SD MEMORY is recommended for the dedicated SD card of GNET.
※ The contents of this product are subject to change without prior notice for improvement of product performance.

Product Specifications

Image sensor	UHD CMOS sensor
Audio input	Built-in microphone
Video compression	ADPCM
Audio compression	ADPCM
Recording resolution	Front Cam 1080P(3840X2160P), Rear Cam 1080P(1920X1080P)
Frame per second	Max 30fps / FRONT/REAR CAM Max 30fps
Wi-Fi button	Smartphone registration standby mode
Vibration sensor	Event recording by impact
Voice Support (Speaker)	An audible alarm and voice guidance for operational status.
External GPS sensor	Location & speed recording, based on Google map (Optional)
Lens	Front: about 160 degree wide-angle lens / Rear: about 150 degree wide-angle lens
Viewer	Windows XP/VISTA / 7 / 8 / 10, 32Bit / 64Bit supported
OBD2	Internet Explorer 10 or higher required
Power	Vehicle Status Check and Diagnosis by using OBD2 module (OPTIONAL)
Acceptable current value of the supplied fuse	DC 12V ~ 24V
Operation Temperature	3A
Humidity	-20°C ~ 80°C (Storage : -20°C ~ 90°C)
LCD(touch)	10~95%
	480X320 Electrostatic LCD touch screen

※ Some specifications of the product are subject to change without prior notice for quality improvement.

Estimated recording time by SD card capacity

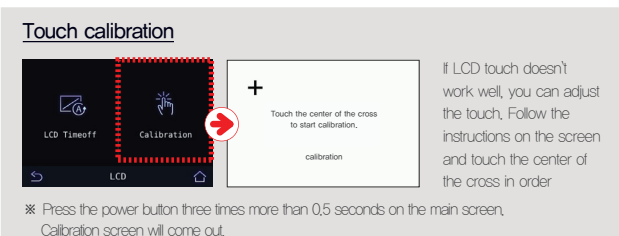
16GB(1hour 20min.), 32GB(3hours 40min.), 64GB(8hours 20min.), 128GB(16hours 40min.), 256GB(32hours 20min.), 512GB(64hours 40min.), 1TB(128hours 20min.)

※ Approximate recording time, depending on driving environment.

Product usage explanation

How to operate a product - Main screen

- When the product is turned on, the following screen is displayed on the LCD along with the message "Start recording".
- Play: Play a recorded video back.
 - LCD off: Touch to turn off the LCD screen. After the screen goes off, touch LCD to turn it on again.
 - Live: You can check the current image. You can change various settings.
 - Setup: You can change various settings.
- Wi-Fi: When you touch the Wi-Fi button, you will hear the voice "standby mode for the registration". If there is no connection for 2 minutes, it is automatically disconnected. If you touch the button again, the announcement voice comes out.
- Power Off: The system will shut down. If you shut down the dash cam by pressing the power button, you must press the power button again to restart the black box.



ADAS Feature Description

- Lane deviation, front car departure and collision alarm tone can be only viewed when LCD is in live screen.
 - To increase ADAS recognition rate, it is recommended to install a dash cam at the center.
 - At night, ADAS recognition rates may be reduced.
- Lane departure detection: A function that notifies you when you are out of lane. As shown in the picture, if the line is detected while driving, the green dot is displayed. When you are being out of lane, the red dot is displayed as shown in the above picture and a notification sounds. Please be noted that Lane Departure Detection alerts only work at or above the set speed.
- Front car start: A function that informs the driver that the front vehicle has departed as shown in the picture. If the distance from the front car is more than 2 meters during the stop, the front car start icon is displayed on the LCD screen with a notification sound.
- Collision alarm: A function that notifies you when there is a risk of collision with the car ahead. When the distance from the front car is short and the vehicle speed is fast, When the distance from the front car suddenly decreases in a short time, the Collision Alarm can be displayed with a warning sound.

Smartphone connection

How to connect a smartphone - Android

- After installing Gnet app, run it on the smartphone screen.
- Tap Wi-Fi button of the dash cam. You can hear a voice message "standby mode for registration".
 - The registration standby mode keeps for 2 minutes. When the time elapsed, the voice guidance "standby mode for registration is released" will come out.
- Tap "Device registration" button in the center of the mobile APP screen.
 - When Wi-Fi search is completely, select any dash cam that you want by using the left and right arrows and then click the button "Connecting Device".
- The registration of the dash cam is completed. Enter the information at the bottom of the mobile app screen for help with connection. If the connection fails, information input is to distinguish when using multiple dash cams.
 - Please go to "Customer Support" at the bottom of the mobile app screen for help with connection. If you still have difficulty connecting, you can contact our customer center for help.

APP Main Screen Description

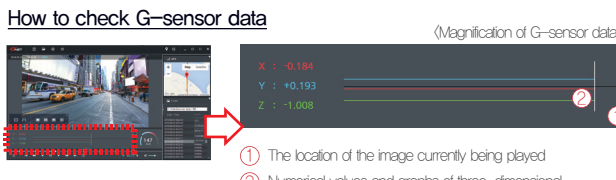
- The function allows you to connect another dash cam or delete the registered device.
 - This function is supported only on Android mobile.
 - You can watch a real-time video.
 - You can easily change settings via your smartphone. After changing the settings, tap "Save" button. The dash cam will be rebooted.
 - You can see a recorded video of the dash cam. The video that you need can be saved to the mobile device via download.
 - You can get help with connection via customer support on app or you can get help by calling our customer support center.
- Description for a recorded video screen [APP]**
- Real-time video and recorded video screen are provided in both portrait and landscape modes so you can view the footage on a wider screen depending on the situation.
 - While playback, any footage is not recorded to stabilize the product. Recording automatically starts when modes switched from a playback mode to a live mode.

Capacitive Touch LCD Operation method

- When dragging from the main screen to the left, the live screen appears in the order (Main> Setup> System> Menu).
- When dragging from the main screen to the right, the live screen appears.
 - In the real-time screen, drag left or right to move to the main screen.
- You can zoom in and out with two fingers on the live screen or on the recorded video playback screen.
 - If you want to view the image in its original size, press the LCD for about one second with one finger to return the image to its original size.

Player menu name

- Upper button: Save, Folder Open, Print, Settings
- Google Map: When GPS and internet are connected, full work normally.
- Play a recorded video: Reverse and forward play, Pause, Repeat, Next Event, Play one frame
- Adjust playback speed: Adjust playback speed
- Sound control: Sound control
- G-sensor (acceleration) graph: G-sensor (acceleration) graph. It can be used only when an external GPS is connected.
- Video control popup: Thumbnail, Lane drawing, View video, Split Views, TTP Views, Switch to Color or Black Mode



- When you play the video, three-dimensional coordinate system information (G-sensor data) on the X-axis (longitude direction), Y-axis (left-right), and Z-axis (height) of the image currently being played at the G-sensor data location is output.

How to connect your smartphone - iOS

- After installing Gnet app, run it on the smartphone screen.
- Tap Wi-Fi button of the dash cam. You can hear a voice message "standby mode for registration".
 - The registration standby mode keeps for 2 minutes. When the time elapsed, the voice guidance "standby mode for registration is released" will come out.
- Turn on Wi-Fi in the Settings menu on your smartphone.
 - Settings: Airplane Mode, Wi-Fi
- In the Wi-Fi list, select a name that starts with GNET_88_XXXX.
 - Cancel, Enter Password, Join
- The connection to the dash cam is complete and Gnet app is available.
 - If the connection fails, Please go to "Customer Support" at the bottom of the mobile app screen for help with connection. If you still have difficulty connecting, you can contact our customer center for help.

Warranty Certificate

Product	GNET Dash cam	Model	GK
Serial Number		Purchasing date	
Consumer	Name, Address	Tel	

※ Warranty period of each part is as follows
 - Front camera, Rear Camera : 1 Year
 - Memory Card, External GPS : 3 Months
 - Power Cable, Unintegrated Cable : 3 Months

※ If you would like to repair the product, please contact by e-mail address info@gnetsystem.com

HQ: 6F, Lotte IT Castle 2-Dong, Gasan Digital 2-98, Geumcheon-gu, Seoul, Korea, 08506
 Factory: Songsan-ro 514-5 Songsan-myun, Hwasung-si, Gyeonggi-Do, Korea
 Tel: +82 2 880-1728
 E-mail: info@gnetsystem.com
 Website: www.gnetsystem.com/en

